

PHONE { 542-7947
542-4407
542-4408
542-4409

FREDERICK CLAGETT, Inc.
Electrical Contractors

ELECTRIC WIRING, FIXTURES, APPLIANCES, LAMPS, REPAIRS

4802 PIMLICO ROAD
BALTIMORE 15, MD.

Sept. 6, 1963

*Hub - HK
20 x 12 x 18
3-6000 wattage, 1 knob*

United Evangelical Church
East & Dillon Streets,
Baltimore 24, Maryland

Gentlemen:

Furnish and install 18,000 watt manual operated dimmer
in church entry, to operate main area of church only.

Cost of dimmer \$615.25.

Cost of cabinet to hold dimmer \$120.75.

Cost of labor, permits and plastering \$734.99.

Total cost of contract \$1,470.99.

Yours very truly,
Frederick Clagett, Inc.

*4 to 6 weeks for delivery
10 days for installation*

James M. Coyle Jr
James M. Coyle, Jr.
General Manager

FC, Inc.
e.b.

CATALOG SUPPLEMENT NO. 18A
FILE IN CATALOG No. 100
SECTION 3, PANELS AND
PRINTS IN PRICE LIST No. 101
This catalogue, supplement and price
list are for reference only.

boxed unit with...
with a ground case...
Also available in other case styles...
with either hand control or lever control...

AVAILABLE AT...
may be furnished with 3...
(-) to Cat No. Example: 1820000 or 1820001

Size of Dimmer used

20" wide

18" High

18" DEEP

U.L. Approved

QUALITY SINCE 1914

CONTROLS

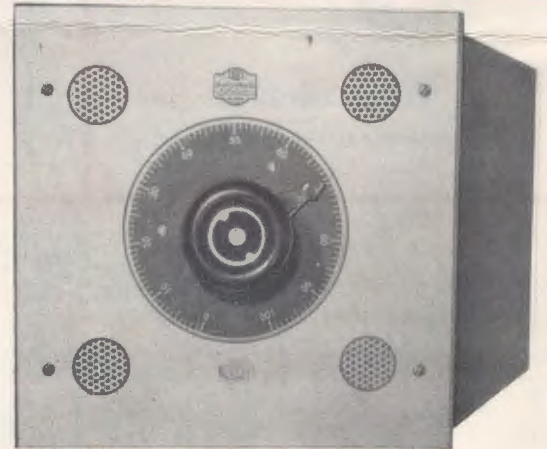
CATALOG SUPPLEMENT NO. 10A*

File in Catalog No. 100

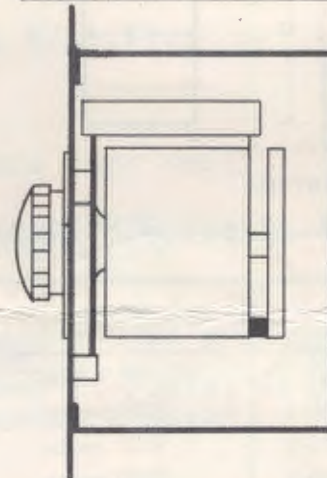
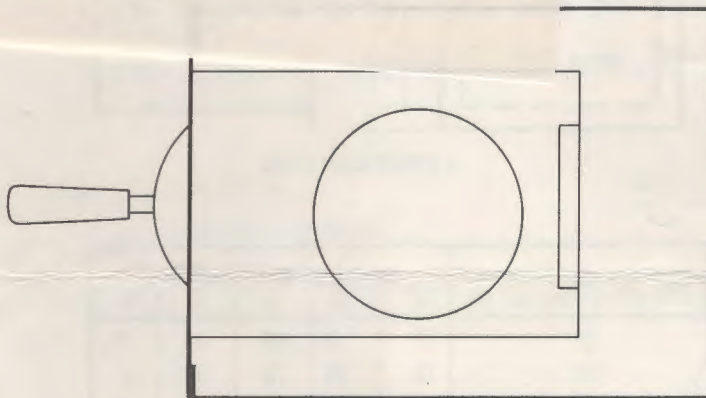
SECTION 2, PAGES 1 AND 2

Prices in Price List No. 101 B

*This supplement supercedes and replaces Supplement No. 10.



FLUSH MOUNTED



CAT. NO. HK1000
KNOB CONTROL
FLUSH MTD.

APPLICATION

These non-interlocking, 120 V., 60 cycle, auto-transformer dimmers are furnished with enclosing housings and fronts for flush or surface mounting. They permit dimming control of incandescent or fluorescent lamp loads as indicated in table on reverse side.

SPECIFICATIONS

All units fabricated entirely of steel, with screen

backed vent holes. Recessed housing finished with a ground coat. Fronts and surface mounted housings finished in grey-green wrinkle finish. Also available in prime coat finish, when specified, to permit finishing on the job. Furnished with either knob control or lever control as indicated in table on reverse side.

AVAILABLE AT EXTRA COST - 2500 W units can be furnished with 3 dimmers. Add suffix (-3) to Cat. No. Example: HK2500-3 or HL2500-3.



Hub Enclosed Dimmers

U.L. Approved

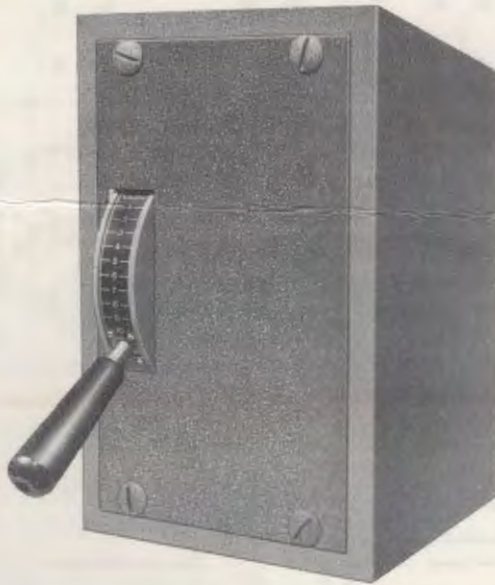
QUALITY SINCE 1914

ENGINEERED LIGHTING AND CONTROLS

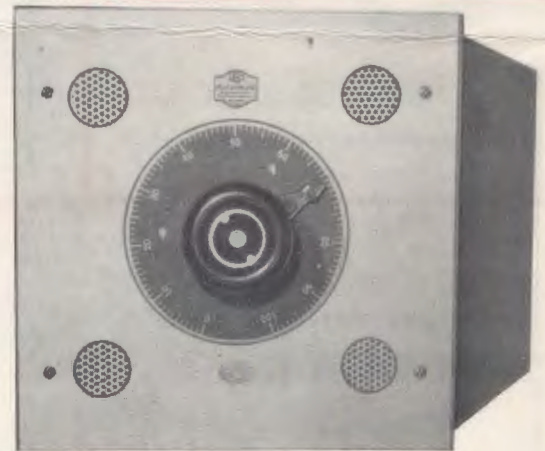
CATALOG SUPPLEMENT NO. 10A*
File in Catalog No. 100

SECTION 2, PAGES 1 AND 2
Prices in Price List No. 101 B

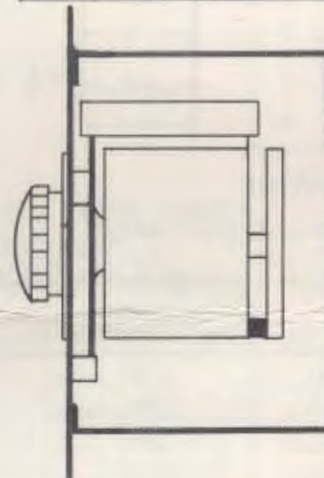
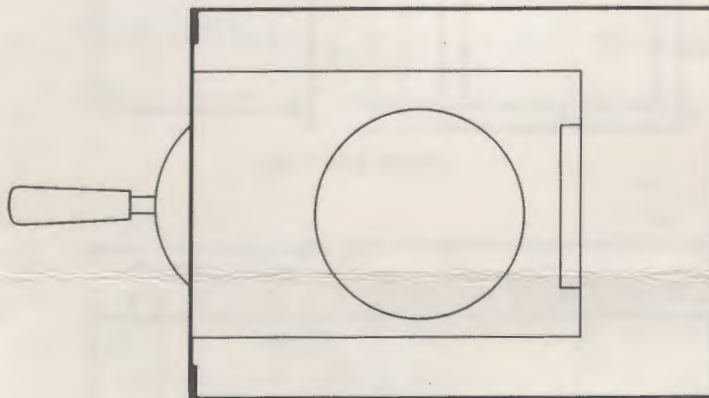
*This supplement supercedes and replaces Supplement No. 10.



CAT. NO. HL1200
LEVER CONTROL - SURFACE MOUNTED



CAT. NO. HK1000
KNOB CONTROL
FLUSH MTD.



APPLICATION

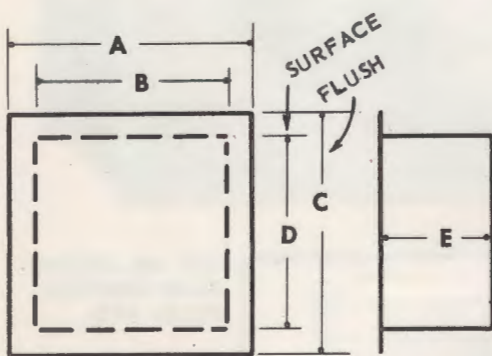
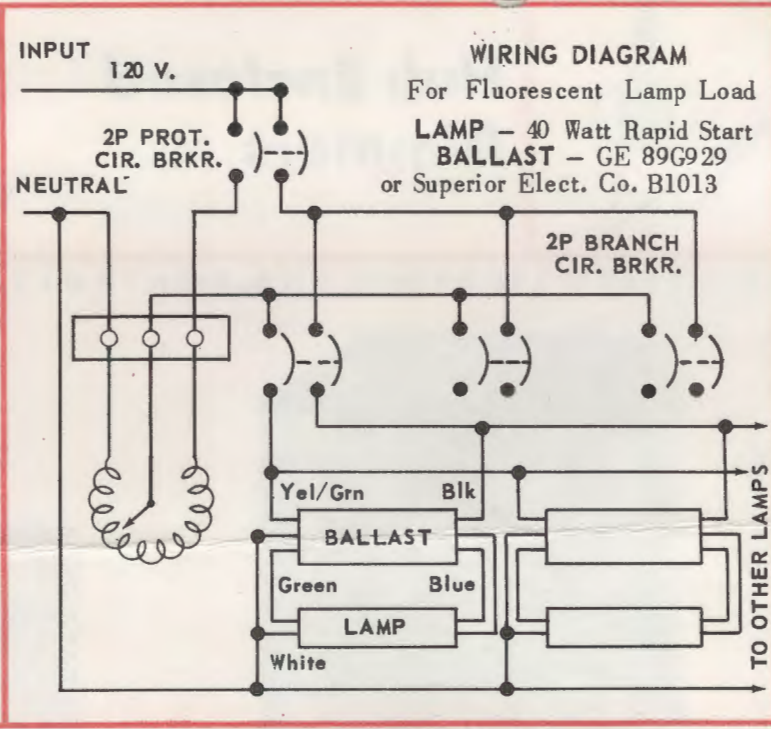
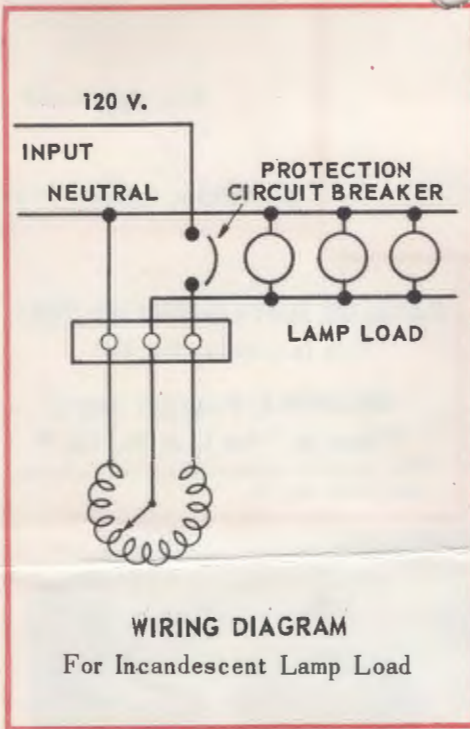
These non-interlocking, 120 V., 60 cycle, auto-transformer dimmers are furnished with enclosing housings and fronts for flush or surface mounting. They permit dimming control of incandescent or fluorescent lamp loads as indicated in table on reverse side.

SPECIFICATIONS

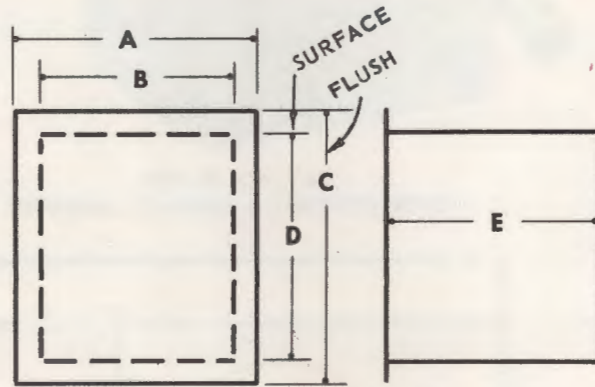
All units fabricated entirely of steel, with screen

backed vent holes. Recessed housing finished with a ground coat. Fronts and surface mounted housings finished in grey-green wrinkle finish. Also available in prime coat finish, when specified, to permit finishing on the job. Furnished with either knob control or lever control as indicated in table on reverse side.

AVAILABLE AT EXTRA COST - 2500 W units can be furnished with 3 dimmers. Add suffix (-3) to Cat. No. Example: HK2500-3 or HL2500-3.



KNOB CONTROL



LEVER CONTROL

KNOB CONTROL

HK6000-3

NO. DIMMERS IN HOUSING	CAT. NO.	MAX. INCANDESCENT LAMP LOAD CONTROLLED	MAX. NO. FLUORESCENT LAMPS CONTROLLED *†	DIMENSIONS IN INCHES				
				A	B	C	D	E
1*	HK1000	1000 watts	27	10	8	10	8	7½
1	HK2500-1	2500 watts	55	15	13	13	11	8
2	HK2500-2	5000 watts	110	15	13	13	11	13
1	HK6000-1	6000 watts	135	22	20	20	18	8
2	HK6000-2	12,000 watts	270	22	20	20	18	13

LEVER CONTROL

1	HL1200	1200 watts	30	11	9	11	135/8	12
1	HL2500-1	2500 watts	55	11	9	155/8	135/8	12
2	HL2500-2	5000 watts	135	16	14	155/8	135/8	12

* When used with new style GE 89G29 (or equal) dimming ballast ONLY. If old style dimming ballast GE 89G718 (or equal) is to be used, fluorescent auxiliaries are required and housing dimensions and number of lamps controlled will vary. Wiring and dimensional data available on request.

† 40 Watt, T-12, rapid start only.